

Our operational areas:

Multi-electrode geoelectric (ERT), depth soundings, and electromagnetics

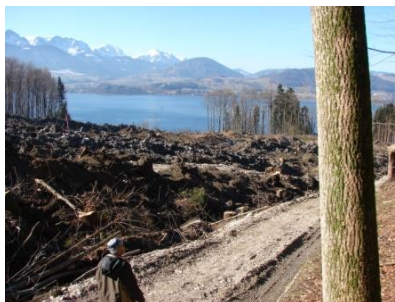
- setup of subsurface models for foundations of building projects, mining companies, quarries, determination of optimal drilling locations.



- we develop models of aquifers to determine thickness and depth.

We are specialized in:

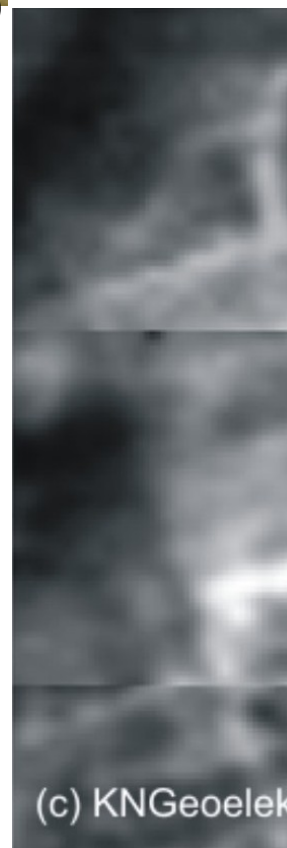
- **problematic subsurface explorations**



- **measuring depths down to 250 m**
- **difficult terrain, for example: high mountains**



- detailed analysis of the soil (search for impurities, cavities or brick-work)



- water resources mapping, leakage detection